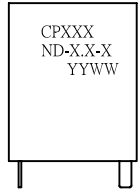
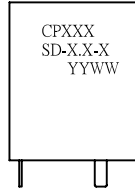




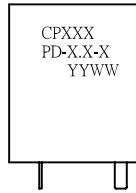
Product Name : Current Sensor (Dual Voltage Supply)



N Type



S Type



P Type

FEATURES

- ◎ Compact and light weight
- ◎ Quick response speed
- ◎ Excellent linearity
- ◎ No damage by one-short over-current
- ◎ Excellent frequency response
- ◎ Capability of measuring AC/DC current
- ◎ Capability of providing complete isolation between the measuring circuit and the current-carrying conductor

APPLICATION

- ◎ AC and DC servo system
- ◎ General and special purpose inverters
- ◎ Industrial robots
- ◎ UPS system
- ◎ Inverter controlled welding machines
- ◎ Controller of elevators
- ◎ Speed controller of motor.
- ◎ Controller of electrical vehicles
- ◎ Controller of traction equipment such as electric trains
- ◎ Other automatic control system.

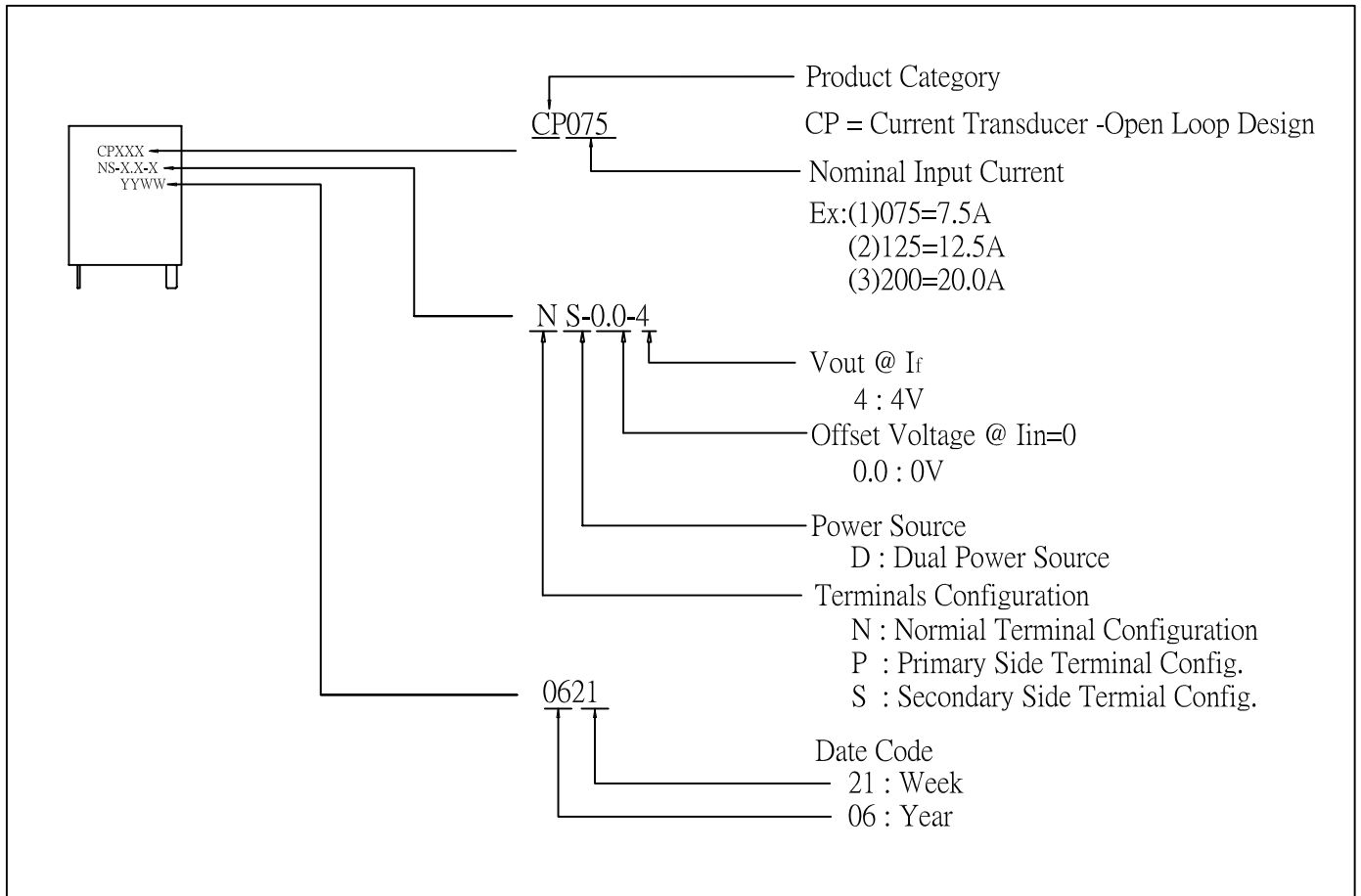


ELECTRICAL CHARACTERISTICS (T_a=25°C, V_{CC}=+15V)

| Symbol | Parameter | Unit | 5A | 7.5A | 10A | 12.5A | 15A | 20A | 25A | 30A | 50A |
|------------------|---|------|-----------|--------|-----|--------|-------|-----|-------|-----|------|
| If | Nominal Primary DC Current | ADC | ±5 | ±7.5 | ±10 | ±12.5 | ±15 | ±20 | ±25 | ±30 | ±50 |
| Is | Maximum Current | ADC | ±12.5 | ±18.75 | ±25 | ±31.25 | ±37.5 | ±50 | ±62.5 | ±75 | ±125 |
| V _{cc} | Supply Vpltage | VDC | ±15V ±5% | | | | | | | | |
| I _c | Current Consumption | mA | <15mA | | | | | | | | |
| V _{is} | R.M.S Voltage for 2.5KV AC Isolation test,60/50 Hz,1.0MIN | mA | <1mA | | | | | | | | |
| R _{is} | Isolation Resistance at 500VDC | Mohm | >500 Mohm | | | | | | | | |
| R _{out} | Output Impedance | Ohm | <150 ohm | | | | | | | | |
| V _{out} | Output Voltage of If@25 | VDC | ±4.000V | | | | | | | | |
| V _o | Zero offset Voltage,@If=0,@25 | mV | ±60mV | | | | | | | | |
| EL | Linearity from 0 to If@25 | % | 1% | | | | | | | | |
| T.C | Thermal Drift | %/ | ±0.03%/ | | | | | | | | |
| t _r | response Time | us | <5us | | | | | | | | |
| TA | Ambient Operating Temperature | | -10~+80 | | | | | | | | |
| T _s | Ambient Storage Temperature | | -25~+85 | | | | | | | | |



MARKING & HOW TO ORDER

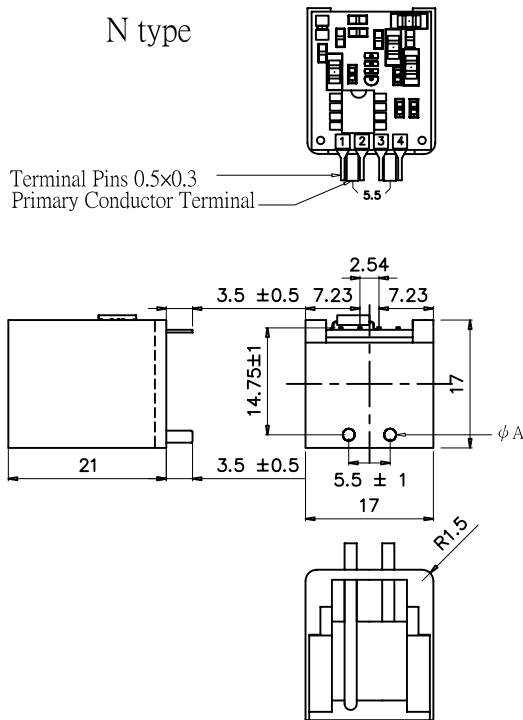


| Daul DC Power Supply Type | | |
|---------------------------|-------|---------------------------------|
| Ispan(A) | A(mm) | Turn(T) |
| 5 | 0.8 | 7T N&S&P P-TYPE |
| 7.5 | 0.8 | 7T N&S&P P-TYPE |
| 10 | 1 | 5T N&S&P P-TYPE |
| 12.5 | 1 | 4T N&S&P P-TYPE |
| 14.2 | 1.3 | 4T N&S&P P-TYPE |
| 15 | 1.3 | 4T N&S&P P-TYPE |
| 20 | 1.5 | 3T N&S&P P-TYPE |
| 25 | 1.6 | 2T N&S&P P-TYPE |
| 30 | 1.6 | 2T N&S&P P-TYPE |
| 50 | 1.6 | 1T 2 Parallel Wire Wound N-TYPE |



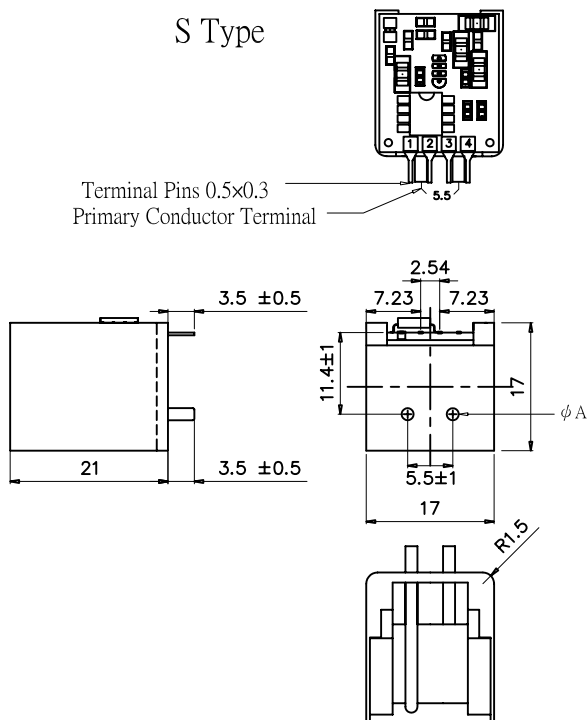
OUTLINE DIMENSION (Unit:mm)

N type



- Dual DC Power Source Type
Terminal Pin Identification
1. -15V SUPPLY VOLTAGE
 2. GROUND
 3. +15V SUPPLY VOLTAGE
 4. OUTPUT
 5. If+ Positive Primary Current
 6. If- Negative Primary Current

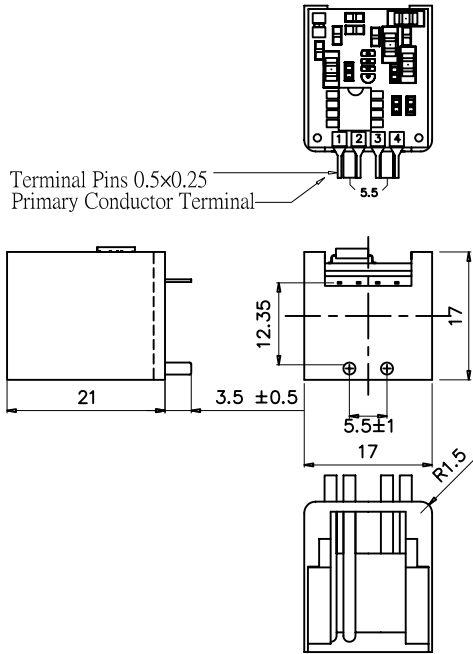
S Type



- Dual DC Power Source Type
Terminal Pin Identification
1. -15V SUPPLY VOLTAGE
 2. GROUND
 3. +15V SUPPLY VOLTAGE
 4. OUTPUT
 5. If+ Positive Primary Current
 6. If- Negative Primary Current



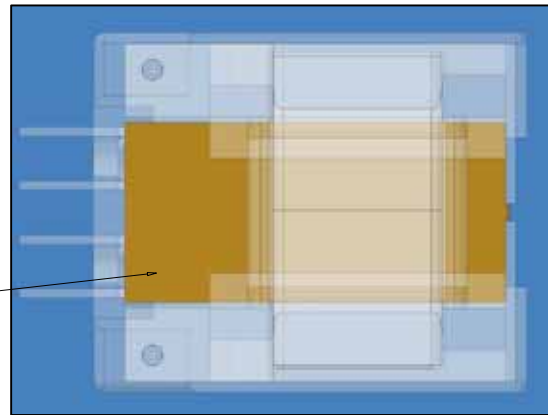
P Type



- Dual DC Power Source Type
Terminal Pin Identification
1. -15V SUPPLY VOLTAGE
 2. GROUND
 3. +15V SUPPLY VOLTAGE
 4. OUTPUT
 5. If+ Positive Primary Current
 6. If- Negative Primary Current

Plastics thin correct to copper thin

Copper thin



均鈺科技股份有限公司
 桃園縣八德市和平路772巷20號
 電話:886-3-3756109 傳真:886-3-3756108
 網址:<http://www.hypro.com.tw/>
 聯絡人:鄭原輝 先生 hypro@ms5.hinet.net